

Cardigan with garter stitch shawl collar & raglan set-in sleeves



INTERMEDIATE KNITTING

MEASUREMENTS

2 4 6 8 10 years

Finished Measurement:

65 70 75 80 85 cm

Length:

38 42 46 50 56 cm

Sleeve Length:

23 28 31 38 38 cm

MATERIALS

Carnival 8ply (100g balls)

Quantity

2 3 3 3 3

OR **Carnival Wool 8ply** (50g balls)

Quantity

7 8 8 9 9

OR **Panda Woolblend 8ply Crepe** (50g balls)

Quantity

5 6 6 7 8



One pair of 4.00mm knitting needles or THE REQUIRED SIZE TO GIVE CORRECT TENSION; 2 stitch holders; 4 buttons; wool needle for sewing seams.

TENSION

This handknit has been designed at a tension of 22 sts and 30 rows to 10cm over stocking st, using 4.00mm needles.

ABBREVIATIONS

alt = alternate; **beg** = begin/ning; **cm** = centimetres; **cont** = continue; **dec** = decrease, decreasing; **foll** = follows, following; **garter st** = every row knit; **inc** = increase, increasing; **K** = Knit; **'M1'** = make 1 - pick up loop which lies before next st, place on left hand needle and knit into back of loop; **0** = (zero) - no sts, rows or times; **P** = Purl; **patt** = pattern; **rem** = remain/ing; **rep** = repeat; **st/s** = stitch/es; stocking st = knit right side rows, purl wrong side rows; **tog** = together

BACK

Using 4.00mm needles, cast on 74 (80-84-90-96) sts.

Work 13 (15-17-17-19) rows garter st (1st row is wrong side).

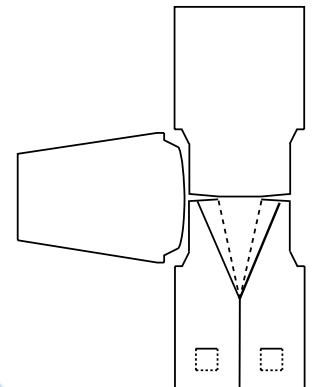
Work in stocking st (beg with a knit row) until work measures 20 (23-24-26-30) cm from beg, ending with a purl row.

Tie a marker at each end of last row to indicate beg of Front neck shaping.

Work a further 14 (16-20-20-22) rows stocking st.

Shape Armholes:

Cast off 2 sts at beg of next 2 rows ... 70 (76-80-86-92) sts.



Dec one st at each end of next and foll alt rows until **62** (66-70-74-80) sts rem.

Work **31** (31-33-39-41) rows stocking st (without further dec).

Shape Shoulders:

Cast off **6** (6-7-7-8) sts at beg of next 4 rows, then **6** (7-6-7-7) sts at beg of foll 2 rows.

Cast off rem **26** (28-30-32-34) sts loosely.

POCKET LININGS (make 2)

Using 4.00mm needles, cast on 19 sts.

Work 19 rows stocking st. Leave sts on a stitch holder.

LEFT FRONT

Using 4.00mm needles, cast on

40 (43-46-50-53) sts.

Work **13** (15-17-17-19) rows garter st (1st row is wrong side).

Beg Front Band:

1st Row: Knit.

2nd Row: K7 (8-9-9-10), purl to end.

Rep last 2 rows 9 times.

Place Pocket:

Next Row: Knit.

Next Row: K7 (8-9-9-10), P7 (8-9-11-12), K19, purl to end.

Rep last 2 rows **6** (7-8-8-9) times.

Next Row: K7 (8-9-11-12), cast off next 19 sts, knit to end.

Next Row: K7 (8-9-9-10), P7 (8-9-11-12), holding pocket lining at front of work (wrong side facing), purl across sts from pocket lining stitch holder, purl to end.

Cont in stocking st, keeping garter st front band correct, until work measures same as Back to front neck shaping marker, ending with a purl row.

Shape Front Neck:

1st Row: K31 (33-35-39-41), K2tog, place marker to indicate collar fold, inc in next st, knit to end.

2nd Row: Knit to marker, purl to end.

Cont front neck shaping, dec one st before marker and inc one st after marker (as in 1st row) in foll 6th rows from previous shaping **2** (2-3-3-3) times.

Work **1** (3-1-1-3) row/s stocking st (without further shaping) keeping garter st collar correct.

Shape Armhole:

Cast off 2 sts at beg of next row ...

38 (41-44-48-51) sts.

NOTE: *Front slope dec and collar inc both cont while working armhole shaping.*

Dec one st at armhole edge of foll alt rows **4** (5-5-6-6) times in all, *AT SAME TIME* dec one st **before** marker in foll 6th rows from previous shaping **5** (2-2-7-5) times, then in foll 8th row/s **1** (4-4-1-3) time/s, **and AT SAME TIME** inc one st **after** marker in foll **6th** (6th-8th-6th-6th) rows **4** (6-3-4-5) times, then in foll **8th** (8th-10th-8th-8th) row/s **2** (1-2-3-3) time/s ... **34** (37-38-41-45) sts. Work **1** (1-3-3-3) row/s stocking st (without further shaping) keeping garter st collar correct.

Shape Shoulder:

Cast off **6** (6-7-7-8) sts at beg of next and foll alt row.

Work 1 row.

Cast off **6** (7-6-7-7) sts at beg of next row ...

16 (18-18-20-22) sts.

Shape Collar:

Cont on these **16** (18-18-20-22) sts for garter st collar.

Knit 2 rows.

Beg Turnings:

NOTE: *When pattern specifies 'turn'*

– proceed as follows (to avoid holes in work)

– take yarn under needle and onto other side of work, slip next st onto right hand needle, take yarn under needle and back to original position, slip st back onto left hand needle, then turn and proceed as instructed in patt.

1st Row: K12 (14-14-15-16), turn.

2nd Row: Knit to end.

3rd Row: Knit across all sts.

4th Row: As 3rd row.

Rep last 4 rows **12** (14-15-15-16) times,

Sizes 2 and 8 years only – then rows 1-3 incl once.

All Sizes –

Knit **0** (1-1-0-1) row/s.

Cast off.

RIGHT FRONT

Using 4.00mm needles, cast on

40 (43-46-50-53) sts.

Work **13** (15-17-17-19) rows garter st (1st row is wrong side).

Beg Front Band:

1st Row: Knit.

2nd Row: Purl to last **7** (8-9-9-10) sts, K7 (8-9-9-10).

Rep last 2 rows 9 times.

Place Pocket:

Next Row: Knit

Next Row: P7 (8-9-11-12), K19,

P7 (8-9-11-12), K7 (8-9-9-10).

Rep last 2 rows **6** (7-8-8-9) times.

Next Row: K14 (16-18-20-22), cast off next 19 sts, knit to end.

Next Row: P7 (8-9-11-12), holding pocket lining at front of work (wrong side facing), purl across sts from pocket lining stitch holder, purl to last **7** (8-9-9-10) sts, K7 (8-9-9-10).

Cont in stocking st, keeping garter st front band correct, until work measures same as Back to Front neck shaping marker, ending with a purl row.

Shape Front Neck:

1st Row: K6 (7-8-10-11), inc in next st, place marker to indicate collar fold, K2tog, knit to end.

2nd Row: Purl to marker, knit to end.

Cont front neck shaping, inc one st before marker and dec one st after marker (as in 1st row) in foll 6th rows from previous shaping **2** (2-3-3-3) times.

Work **2** (4-2-2-4) rows stocking st (without further shaping) keeping garter st collar correct.

Shape Armhole:

Cast off 2 sts at beg of next row ...

38 (41-44-48-51) sts.

Dec one st at armhole edge of next and foll alt rows **4** (5-5-6-6) times in all, *AT SAME TIME* inc one st **before** marker in foll **6th** (6th-8th-6th-6th) rows from previous

shaping **4** (6-3-4-5) times, then in foll **8th** (8th-10th-8th-8th) row/s **2** (1-2-3-3) time/s **and AT SAME TIME** dec one st **after** marker in foll 6th rows from previous shaping **5** (2-2-7-5) times, then in foll 8th row/s **1** (4-4-1-3) time/s ... **34** (37-38-41-45) sts.

Work **2** (2-4-4-4) rows stocking st (without further shaping) keeping garter st collar correct.

Shape Shoulder:

Cast off **6** (6-7-7-8) sts at beg of next and foll alt row.

Work 1 row.

Cast off **6** (7-6-7-7) sts at beg of next row ... **16** (18-18-20-22) sts.

Shape Collar:

Cont on these **16** (18-18-20-22) sts for garter st collar.

Knit 2 rows.

Beg Turnings:

1st Row: K12 (14-14-15-16), turn.

2nd Row: Knit to end.

3rd Row: Knit across all sts.

4th Row: As 3rd row.

Rep last 4 rows **13** (15-16-16-17) times.

Cast off.

SLEEVES

Using 4.00mm needles, cast on

36 (38-40-42-44) sts.

Work **13** (15-17-17-19) rows garter st (1st row is wrong side).

Work 2 rows stocking st (beg with a knit row).

Next Row: K2, 'M1', knit to last 2 sts, 'M1', K2 ... **38** (40-42-44-46) sts.

Cont in stocking st, inc one st at each end (as in previous row) of foll 6th rows until there are **52** (58-56-68-74) sts, then in foll 8th row/s until there are **54** (60-64-72-76) sts.

Cont in stocking st (without further inc) until work measures **23** (28-33-38-40) cm from beg, ending with a purl row.

Shape Top:

Cast off 2 sts at beg of next 2 rows ...

50 (56-60-68-72) sts.

Dec one st at each end of next and foll alt rows until **42** (46-50-56-60) sts rem.

Purl 1 row.

Cast off **4** (5-6-7-7) sts at beg of next 4 rows, then **5** (5-5-6-8) sts at beg of foll 2 rows.

Cast off rem 16 sts.

TO MAKE UP

Join shoulder seams. Placing centre of sleeves to shoulder seam, sew in sleeves evenly. Sew side and sleeve seams. Join left and right ends of collar at centre back neck and sew to neck edge. Sew pocket linings in position. Sew buttons onto Left Front Band, evenly spaced from lower edge until collar shaping begins. 'Self buttonholes' are created by pushing buttons through fabric on Right Front Band. —■

*If you need help with your pattern
phone Australia
613 9380 3888 or Toll Free 1800 337 032
and quote No. Z254.*