

# CARNIVAL

## Soft 8ply

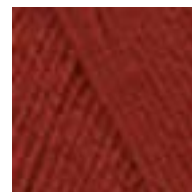


Child's vest with round neck  
and side splits

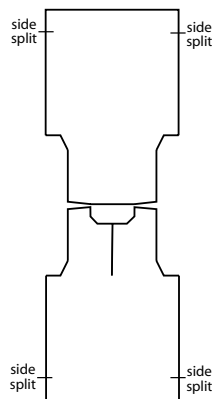


Easy  
Knitting

illustrated in  
colour 9275



# Child's Vest with round neck and side splits



## MEASUREMENTS

	1	2	4	6	8	10	years
To Fit Chest:	52	55	60	65	70	75	cm
Finished Fit:	62	65	70	75	80	85	cm
Length:	36	38	42	46	50	56	cm

## MATERIALS

Carnival Soft 8 Ply (100g balls)  
2 2 3 3 3 4

One pair of 4.00mm knitting needles or THE REQUIRED SIZE TO GIVE CORRECT TENSION; 3 stitch holders; crochet hook for button loop; 1 button; wool needle for sewing seams.

## TENSION

This handknit has been designed at a tension of 22 sts and 30 rows to 10cm over stocking st, using 4.00mm needles.

## ABBREVIATIONS

**approx** = approximately; **beg** = begin/ning; **cm** = centimetres; **cont** = continue; **dec** = decrease, decreasing; **inc** = increase, increasing; **K** = knit; **0** = (zero) – no sts, times or rows; **P** = purl; **patt** = pattern; **rem** = remain/ing; **rep** = repeat; **st/s** = stitch/es; **stocking st** = knit right side rows, purl wrong side rows; **tog** = together.

## BACK

Using 4.00mm needles, cast on **68** (72-76-80-88-92) sts.

**1st Row:** K3, \* P2, K2, rep from \* to last st, K1.

**2nd Row:** P3, \* K2, P2, rep from \* to last st, P1.

Rep last 2 rows **4** (4-3-3-4-3) times, then work 1st row **0** (0-1-1-0-1) time/s.

**Sizes 4, 6 and 10 years only - Next row:** Rib 7, inc in next st, rib to last 8 sts, inc in next st, rib 7.

**All Sizes - 10 rows rib in all ... 68** (72-78-82-88-94) sts.

### Beg Side Split Patt:

**1st row:** K3, P2, knit to last 5 sts, P2, K3.

**2nd row:** P3, K2, purl to last 5 sts, K2, P3.

Rep last 2 rows **1** (1-2-2-4-4) time/s [**4** (4-6-6-10-10) rows in all].

**Next Row:** Cast on one st (seam st - diagram next page), knit to end.

**Next Row:** Cast on one st (seam st), purl to end ... **70** (74-80-84-90-96) sts.

Cont in stocking st until work measures **23** (25-28-31-33-38) cm from beg, ending with a purl row.

### Shape Armholes:

Cast off **4** (4-5-5-5-6) sts at beg of next 2 rows ...

**62** (66-70-74-80-84) sts. \*\*

Dec one st at each end of next and every foll alt row until **54** (58-62-66-70-72) sts rem.

Cont (without further dec) until work measures

**36** (38-42-46-50-56) cm from beg, ending with a purl row.

### Shape Shoulders:

Cast off **5** (6-6-7-7-7) sts at beg of next 4 rows, then

**5** (5-6-6-7-8) sts at beg of foll 2 rows.

Leave rem **24** (24-26-26-28-28) sts on a stitch holder for neckband.

## FRONT

Work as given for Back to \*\*.

### Divide for Front Opening:

**Next Row:** K2tog, **K24** (26-28-30-33-35), P2, K3, **turn**.

Work on these **30** (32-34-36-39-41) sts for left side of front.

**Next Row:** P3, K2, purl to end.

Keeping 5 sts at front opening edge in patt as placed, dec one st at armhole edge in next and foll alt rows until **27** (29-31-33-35-36) sts rem.

Cont (without further dec) until there are **15** (17-17-19-19-19) rows less than Back to beg of shoulder shaping, working last row on right side.

### Shape Neck:

**Next Row:** P3, K2, P1 (1-1-1-2-2), slip these **6** (6-6-6-7-7) sts onto a stitch holder for neckband, purl to end ...

**21** (23-25-27-28-29) sts.

Dec one st at neck edge in next and foll alt rows until **16** (19-19-22-23-24) sts rem, then in foll 4th row/s until **15** (17-18-20-21-22) sts rem.

Work 1 row.

### Shape Shoulder:

Cast off **5** (6-6-7-7-7) sts at beg of next and foll alt row. Work 1 row.

Cast off rem **5** (5-6-6-7-8) sts.

With right side facing, join yarn to rem **31** (33-35-37-40-42) sts, K3, P2, knit to last 2 sts, K2tog.

Work on these **30** (32-34-36-39-41) sts for right side of front.

**Next Row:** Purl to last 5 sts, K2, P3.

Keeping 5 sts at front opening edge in patt as placed, dec one st at armhole edge in next and foll alt rows until **27** (29-31-33-35-36) sts rem.

Cont (without further dec) until there are **14** (16-16-18-18-18) rows less than Back to beg of shoulder shaping, working last row on wrong side.

**Shape Neck:**

**Next Row:** K3, P2, K1 (1-1-1-2-2), slip these **6** (6-6-6-7-7) sts onto a stitch holder for neckband, K2tog, knit to end ... **20** (22-24-26-27-28) sts.

Dec one st at neck edge in foll alt rows until **16** (19-19-22-23-24) sts rem, then in foll 4th row/s until **15** (17-18-20-21-22) sts rem.

Work 2 rows.

**Shape Shoulder:**

Work as given for other shoulder shaping.

## ARMHOLE BANDS

**NOTE:** We recommend using 'Mattress St' to sew up your handknit (diagram below).

Join shoulder seams. With right side facing, using 4.00mm needles, knit up **58** (58-62-70-78-82) sts evenly around armhole edge.

**1st Row:** P2, \* K2, P2, rep from \* to end.

**2nd Row:** K2, \* P2, K2, rep from \* to end.

Rep last 2 rows 3 times, then 1st row once (9 rows rib in all).

Cast off loosely in rib.

## NECKBAND


With right side facing, using 4.00mm needles, slip sts from right front stitch holder onto right hand needle, knit up **12** (14-14-16-16-16) sts evenly along right front neck shaping, knit across sts on back stitch holder - dec **0** (0-2-2-2-2) sts evenly across, knit up **12** (14-14-16-16-16) sts evenly along left front neck shaping, patt across sts on left front stitch holder ... **60** (64-64-68-72-72) sts.

Work 9 rows rib as given for Back, beg with a 2nd row.

Cast off loosely in rib.

## TO MAKE UP

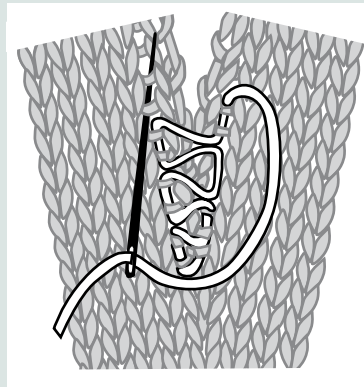
Join side seams from end of side split patt to armhole.

Make a crochet chain, join to form a loop and sew to front edge at neckband. Sew on button. Catch centre of split tog and secure firmly if required 

## MATTRESS STITCH

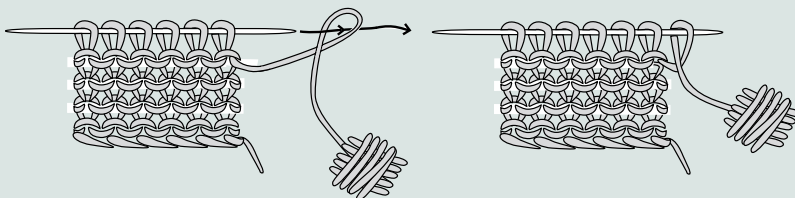
A 'Mattress Stitch' seam is almost invisible, so it is a good way to sew up your knitting. The seam is sewn from the right side so it is easy to see how to keep it straight and neat.

1. Put the two pieces next to each other, right side up and edges together.
2. Thread a wool needle with a long length of yarn.
3. Work one whole stitch (V shape) in from the edge and leave a long end before beginning to sew.
4. Put the needle between the edge stitch and the second stitch on the first row. Pass the needle under 2 rows (2 cross bars), then bring it back through to the front.
5. Repeat step 4 on the other piece.
6. Swap from side to side, always going into the hole that the last stitch on that side came out of. Always go under 2 rows - be careful not to miss any rows.
7. Keep the seam firm but do not pull the yarn too tightly.
8. When the seam is finished, sew in ends.



## CASTING ON A SEAM ST

When casting on a 'seam st', do not inc by knitting into front and back of stitch. Make a st by looping yarn then slipping loop onto left hand needle, then work as first st of row as indicated.



**CARNIVAL**  **hotline**

For Australian residents -

If you need help with your pattern, please phone 03 9380 3888 or Toll Free 1800 337 032 (9am to 5pm Mon - Fri E.S.T.) and quote Z302.

If you live outside Australia please refer to our postal address and website opposite.

**CARNIVAL**

**Carnival Yarns**

A Division of

AUSTRALIAN COUNTRY SPINNERS PTY. LTD.  
314 - 320 ALBERT STREET, BRUNSWICK, VIC. 3056

[www.carnivalyarns.com.au](http://www.carnivalyarns.com.au)

This publication is protected by copyright. Reproduction in any form (including photocopying) without prior permission from Australian Country Spinners will lead to proceedings being brought to restrain any infringement. The only exception is photocopying to enlarge graphs and written instructions for graphs. We have made every effort to ensure that these instructions are accurate and complete. We cannot, however, be responsible for variations in individual work, human error, typographical mistakes or if yarn other than the recommended Carnival yarn is used.