

Women's Short sleeved Cardigan with lacy diamond patterning

CARNIVAL



ADVANCED
KNITTING



MEASUREMENTS	S	M	L	
To fit Size:	8-10	12-14	16-18	
Finished Measurement:	90	100	110	cm
Length:	53	54	55	cm
Sleeve Length:	18	18	18	cm

MATERIALS:

Carnival 8ply (100g balls)

Quantity **3** 3 4

One pair of 4.00mm knitting needles or THE REQUIRED SIZE TO GIVE CORRECT TENSION; 1 stitch holder; 5 buttons; wool needle for sewing seams.

TENSION:

This handknit has been designed at a tension of 21 sts and 30 rows to 10cm over patt, using 4.00mm needles.

ABBREVIATIONS

alt = alternate; **beg** = begin/ning; **cm** = centimetres; **cont** = continue; **dec** = decrease, decreasing; **fol** = follows, following; **inc** = increase, increasing; **incl** = inclusive, including; **K** = knit; **P** = purl; **patt** = pattern; **rem** = remain/ing; **rep** = repeat; **st/s** = stitch/es; **stocking st** = knit right side rows, purl wrong side rows; **tog** = together; **yfwd** = yarn forward – bring yarn under needle then over into knitting position again, making a st; **yrn** = yarn round needle – take yarn right around needle into purling position, making a st.

BACK

Using 4.00mm needles, cast on **97** (105-117) sts.

1st Row: K2, * P1, K1, rep from * to last st, K1.

2nd Row: K1, * P1, K1, rep from * to end.

Rep last 2 rows 6 times (14 rows rib in all), inc one st in centre of last row ... **98** (106-118) sts.

Beg Patt: 1st Row (as on graph): K1, (yfwd, K2tog) **1** (3-6) time/s, K14, * (yfwd, K2tog) 6 times, K14, rep from * to last **3** (7-13) sts, (yfwd, K2tog) **1** (3-6) time/s, K1.

Work rows 2 to 34 incl from Graph as indicated for Back.

Rows 1 to 34 incl form patt.

Cont in patt until work measures 33cm, working last row on wrong side.

Shape Armholes:

Keeping patt correct, cast off 2 sts at beg of next 2 rows ...

94 (102-114) sts.

Dec one st at each end of next and foll alt rows until **80** (88-98) sts rem.

Cont (without further dec) until work measures **53** (54-55) cm from beg, working last row on wrong side.

Shape Shoulders:

Cast off **8** (9-11) sts at beg of next 4 rows, then **9** (10-10) sts at beg of foll 2 rows. Leave rem **30** (32-34) sts on a stitch holder for neckband.

LEFT FRONT

Using 4.00mm needles, cast on **49** (53-59) sts.

Work 14 rows rib as given for Back, omitting inc in last row.

Beg Patt:

Work rows 1 to 34 incl from Graph as indicated for Left Front.

Rows 1 to 34 incl form patt for Left Front.

Cont in patt until work measures same as Back to beg of armhole shaping, working last row on wrong side. **

Shape Armhole:

Keeping patt correct, cast off 2 sts at beg of next row ... **47** (51-57) sts.

Dec one st at armhole edge in alt rows until **40** (44-49) sts rem.

Cont in patt (without further dec) until there are **13** (15-17) rows less than Back to beg of shoulder shaping.

Shape Neck:

Cast off 8 sts at beg of next row ... **32** (36-41) sts.

Dec one st at neck edge in every row until **29** (33-38) sts rem, then in foll alt rows until **25** (28-32) sts rem.

Work 1 row.

Shape Shoulder:

Cast off **8** (9-11) sts at beg of next and foll alt row.

Work 1 row.

Cast off rem **9** (10-10) sts.

If you need help with your pattern phone
Australia 613 9380 3888 or
Toll Free 1800 337 032 and quote No. Z204

CARNIVAL

www.carnivalyarns.com.au

Copyright © Panda Yarns, 2007 all rights reserved. This free pattern is only for personal non-commercial use. Reproduction for commercial gain in any form including photocopying will lead to proceedings being brought by Australian Country Spinners.

We have made every effort to ensure that these instructions are accurate and complete. We cannot, however, be responsible for variations in individuals work, or if yarn other than the recommended Carnival yarn is used.

RIGHT FRONT

Work as given for Left Front to **, noting to work from Graph as indicated for Right Front.

Work 1 row.

Shape Armhole:

Keeping patt correct, cast off 2 sts at beg of next row ... 47 (51-57) sts.

Dec one st at armhole edge in next and foll alt rows until 40 (44-49) sts rem.

Cont in patt (without further dec) until there are 14 (16-18) rows less than Back to beg of shoulder shaping.

Shape Neck:

Cast off 8 sts at beg of next row ... 32 (36-41) sts. Work 1 row.

Dec one st at neck edge in every row until 29 (33-38) sts rem, then in foll alt rows until 25 (28-32) sts rem. Work 2 rows.

Shape Shoulder:

Work as given for Left Front shoulder shaping.

SLEEVES

Using 4.00mm needles, cast on 65 (69-73) sts.

Work 14 rows rib as given for Back, inc one st at centre of last row ... 66 (70-74) sts.

Beg Patt:

Work rows 1 to 4 incl from Graph as indicated for sleeves.

Keeping patt correct as placed and working increased sts into patt, inc one st at each end of next row, then in foll 4th rows until there are 80 (84-88) sts.

Cont (without further inc) until work measures 18cm from beg, working last row on wrong side.

Shape Top:

Keeping patt correct, cast off 2 sts at beg of next 2 rows ...

76 (80-84) sts.

Dec one st at each end of next and foll alt rows until 62 (66-68) sts rem.

Work 1 row.

Cast off 8 (9-9) sts at beg of next 4 rows, then 8 (8-9) sts at beg of next 2 rows. Cast off rem 14 sts.

NECKBAND

Join shoulder seams. With right side facing and using 4.00mm needles, knit up 83 (89-95) sts evenly around neck, incl sts from stitch holder. Work 9 rows rib as given for Back, beg with a 2nd row. Cast off **loosely** in rib.

RIGHT FRONT BAND

With right side facing and using 4.00mm needles, knit up 105 sts evenly along Right Front edge, incl side edge of neckband. Work 5 rows rib as given for Back, beg with a 2nd row.

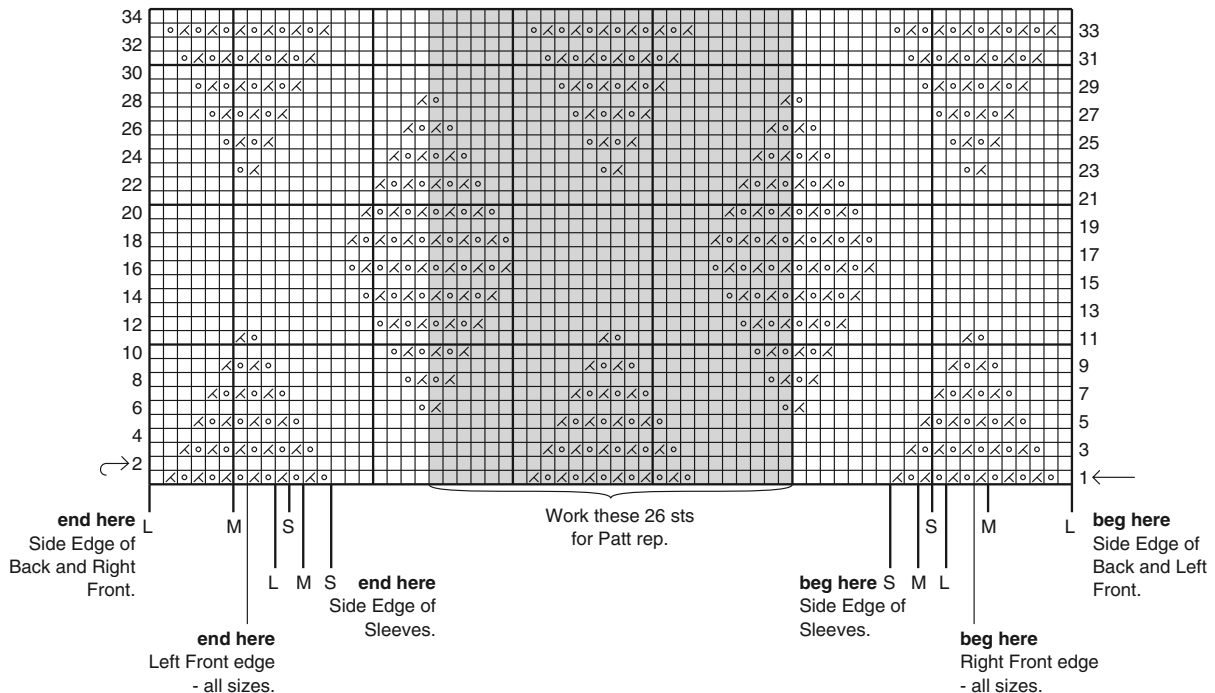
6th Row: Rib 4, * yrn (to make a st), K2tog, rib 22, rep from * 3 times, yrn, K2tog, rib 3 ... 5 buttonholes. Work 3 rows rib. Cast off **loosely** in rib.

LEFT FRONT BAND

Work as given for Right Front Band, omitting buttonholes.

TO MAKE UP

Placing centre of sleeves to shoulder seams, sew in sleeves evenly. Join side and sleeve seams. Sew on buttons.



KEY - Shaded area represents st repeat.

- = Knit st on right side, purl st on wrong side (stocking st).
- = Yfwd on right side, yrn on wrong side.
- = K2tog on right side, P2tog on wrong side.

Note 1: Care must be taken when working in this patt. Do not work a 'K2tog' or 'P2tog', unless the corresponding 'yfnwd' or 'yrn' can be worked and vice versa.

Note 2: When working from Graph, read odd numbered rows (right side rows) from right to left and even numbered rows (wrong side rows) from left to right.

Note 3: For each row, beg at appropriate edge for size being knitted and work to beg of rep, work rep until the number of sts after rep for selected size rem on left hand needle, then work these sts as indicated on Graph.

CARNIVAL

www.carnivalyarns.com.au

**If you need help with your pattern phone
Australia 613 9380 3888 or
Toll Free 1800 337 032 and quote No. Z204**