

Cardigan in All Over Lace



MEASUREMENTS

	S	M	L	XL	
To Fit Bust:	8-10	12-14	16-18	20-22	
Actual Measurement:	75-80	85-90	95-100	105-110	cm
Length:	53	54	55	56	cm
Sleeve Length:	43	43	43	43	cm

MATERIALS

Carnival 8 ply (100g balls)

Quantity	5	5	6	7
----------	---	---	---	---

One pair of 4.00mm knitting needles or THE REQUIRED SIZE TO GIVE CORRECT TENSION; 1 stitch holder; hook and eye; knitter's needle for sewing seams.

TENSION

This handknit has been designed at a tension of 22 sts and 32 rows to 10cm over patt, using 4.00mm needles.

ABBREVIATIONS

alt = alternate; **beg** = begin/ning; **cm** = centimetres; **cont** = continue; **dec** = decrease, decreasing; **fol** = follows, following; **inc** = increase, increasing; **incl** = inclusive, including; **K** = knit; **P** = purl; **patt** = pattern; **psso** = pass slipped st over; **purl fabric** (reverse of stocking st) = purl right side rows, knit wrong side rows; **rem** = remain/ing; **rep** = repeat; **sl** = slip; **st/s** = stitch/es; **stocking st** = 1 row knit, 1 row purl; **tbl** = through back of loop; **tog** = together; **yfwd** = yarn forward - bring yarn under needle, then over into knitting position again, making a stitch; **yrn** = yarn round needle - take yarn right around needle into purling position, making a stitch

BACK

Using 4.00mm needles, cast on **92** (104-120-128) sts.

1st Row (wrong side): Knit.

2nd Row: Purl.

3rd Row: Knit, inc 4 sts evenly across ...

96 (108-124-132) sts.

This completes 3 rows purl fabric.

Beg Patt:

Work rows 1 to 6 incl from graph or written instructions.

Rows 1 to 6 incl form patt for rem.

Cont in patt until work measures 32cm from beg, working last row on wrong side.

Shape Armholes:

Keeping patt correct, cast off 2 sts at beg of next 2 rows ...

92 (104-120-128) sts.

Dec one st at each end of next and foll alt rows until

76 (88-102-110) sts rem.

Cont in patt (without further dec) until work measures

53 (54-55-56) cm from beg, working last row on wrong side.

Shape Shoulders:

Keeping patt correct, cast off **9** (10-12-13) sts at beg of next 4 rows, then **8** (11-13-14) sts at beg of foll 2 rows.

Leave rem **24** (26-28-30) sts on a stitch holder for neckband.

LEFT FRONT

Using 4.00mm needles, cast on **46** (54-62-66) sts.

Work 3 rows purl fabric as given for Back, inc 2 sts evenly across last row ... **48** (56-64-68) sts.

Beg Patt:

Work in patt as given for Back until work measures same as Back to beg of armhole shaping, working last row on wrong side. **

Shape Armhole:

Keeping patt correct, cast off 2 sts at beg of next row ...

46 (54-62-66) sts.

Dec one st at armhole edge in foll alt rows until

38 (46-53-57) sts rem.

Cont in patt until there are **15** (17-19-21) rows less than Back to beg of shoulder shaping, working last row on right side.

Shape Neck:

Keeping patt correct, cast off **6** (8-8-8) sts at beg of next row ...

32 (38-45-49) sts.

Dec one st at neck edge in next and foll alt rows until

27 (32-38-41) sts rem, then in foll 4th row once ...

26 (31-37-40) sts.

Work 1 row patt.

Shape Shoulder:

Keeping patt correct, cast off **9** (10-12-13) sts at beg of next and foll alt row.

Work 1 row patt.

Cast off rem **8** (11-13-14) sts.

RIGHT FRONT

Work as given for Left Front to **.

Work 1 row patt.

Shape Armhole:

Keeping patt correct, cast off 2 sts at beg of next row ...

46 (54-62-66) sts.

Dec one st at armhole edge in next and foll alt rows until

38 (46-53-57) sts rem.

Cont in patt until there are **16** (18-20-22) rows less than Back to beg of shoulder shaping, working last row on wrong side.

Shape Neck:

Keeping patt correct, cast off **6** (8-8-8) sts at beg of next row ...

32 (38-45-49) sts.

Dec one st at neck edge in foll alt rows until **27** (32-38-41)

sts rem, then in foll 4th row once ... **26** (31-37-40) sts.

Work 2 rows patt.

Shape Shoulder:

Work as given for Left Front shoulder shaping.

SLEEVES

Using 4.00mm needles, cast on **46** (50-50-50) sts.

Work 3 rows purl fabric as given for Back, inc 2 sts evenly across last row ... **48** (52-52-52) sts.

Beg Patt:

Work rows 1 to 6 incl of patt as given for Back.

Cont in patt, working extra sts into patt as they become available, inc one st at each end of next and foll

6th (6th-4th-4th) rows until there are **86** (90-64-76) sts, then in

foll **8th** (8th-6th-6th) row/s until there are

88 (92-96-100) sts.

Cont in patt (without further inc) until work measures 43cm from beg, working last row on wrong side.

Shape Top:

Keeping patt correct, cast off 2 sts at beg of next 2 rows ...

84 (88-92-96) sts.

Dec one st at each end of next and foll alt rows until

68 (72-74-78) sts rem.

Work 1 row patt.

Cast off **9** (9-10-10) sts at beg of next 4 rows, then
8 (10-9-11) sts at beg of foll 2 rows.
 Cast off rem 16 sts.

NECKBAND

NOTE: We recommend using 'Mattress St' to sew up your handknit.

Join shoulder seams. With right side facing, using 4.00mm needles, knit up **26** (30-32-34) sts evenly along right front neck shaping, knit across sts on back neck stitch holder, then knit up **26** (30-32-34) sts evenly along left front neck shaping ...
76 (86-92-98) sts.

1st Row (wrong side): Knit.

2nd Row: Purl.

Cast off knitways.

LEFT FRONT BAND

With right side facing, using 4.00mm needles, knit up 103 sts evenly along left front edge incl side edge of neckband.

1st Row (wrong side): Knit.

2nd Row: Purl.

Cast off knitways.

RIGHT FRONT BAND

Work as given for Left Front Band.

TO MAKE UP

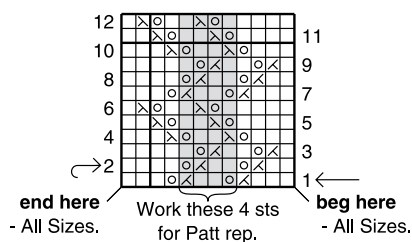
Placing centre of sleeves to shoulder seams, sew in sleeves evenly. Join side and sleeve seams. Sew hook at neck edge.



NOTE 1: When working from Graph, read odd numbered rows (right side rows) from right to left and even numbered rows (wrong side rows) from left to right.

NOTE 2: For each row, beg at edge and work to beg of rep, work rep until the number of sts after rep rem on left hand needle, then work these sts as indicated on Graph.

NOTE 3: Care must be taken when shaping in this patt. Do not work a 'K2tog' or 'sl 1 K1 pssso', unless the corresponding 'yfwd', or 'yrm' can be worked and vice versa.



KEY - Shaded area represents st repeat.

□ = Knit st on right side, purl st on wrong side.

⊖ = Yfwd on right side, or yrm on wrong side (to make a st).

⊗ = K2tog on right side, P2tog on wrong side.

⊠ = Sl 1, K1, pssso on right side, P2tog tbl on wrong side.

If you need help with your pattern phone
 Australia 613 9380 3888 or
 Toll Free 1800 337 032 and quote No. Z240

CARNIVAL
www.carnivalyarns.com.au